

ABITO TUBINO ADERENTE - CARTAMODELLO tg. 46



Abito con cuciture divisorie davanti e dietro, con manica lunga.

Modello aderente

Misure, cm :

C.Seno – 100

C.Vita – 83

C.Bacino – 105

Altezza seno – 29

Lunghezza vita dietro dalla vertebra cervicale – 40 cm

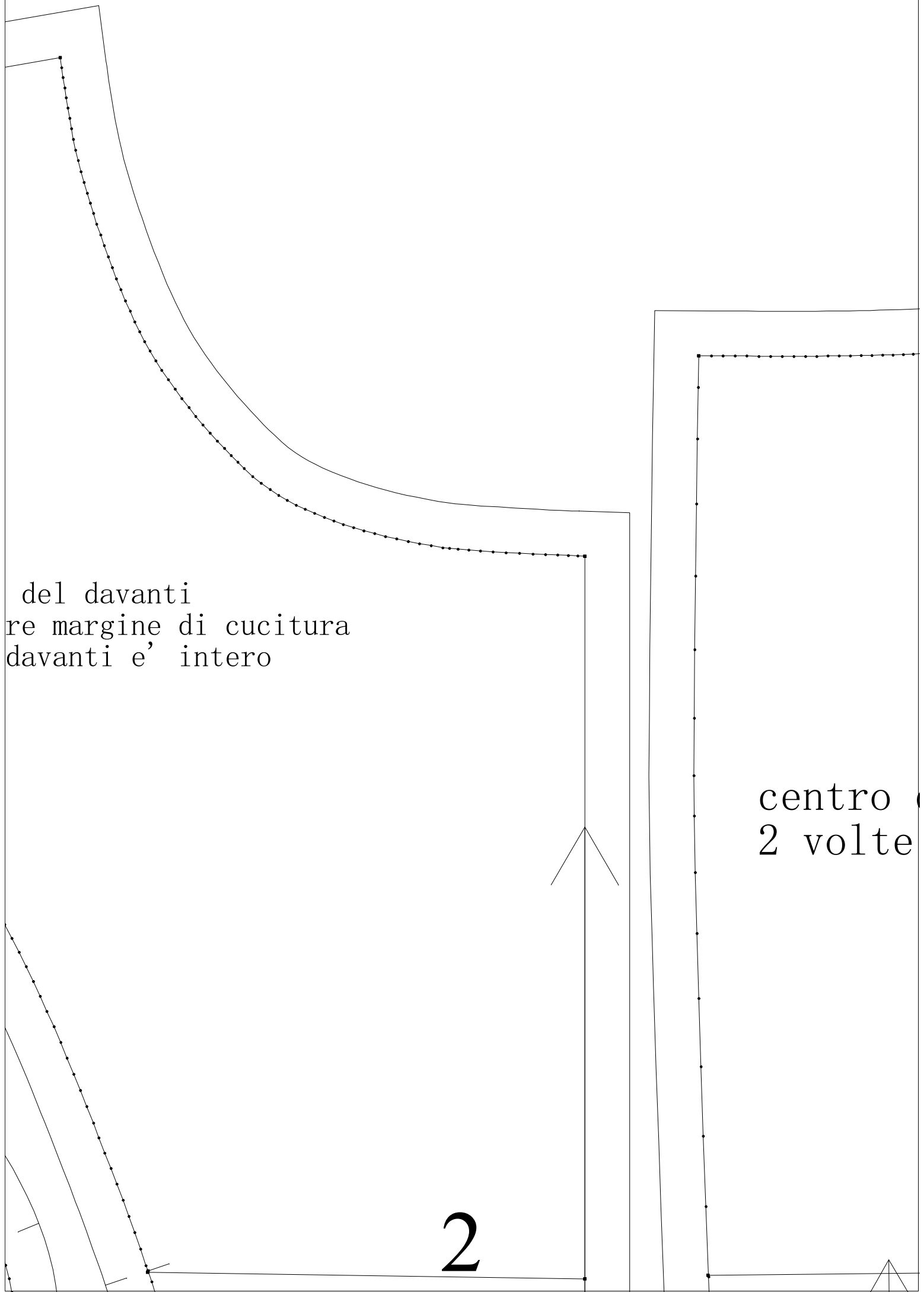
Altezza bacino – 19

Per facilitare modifica del modello ci sono linee seno, vita, bacino.



Centro
ignora
se il

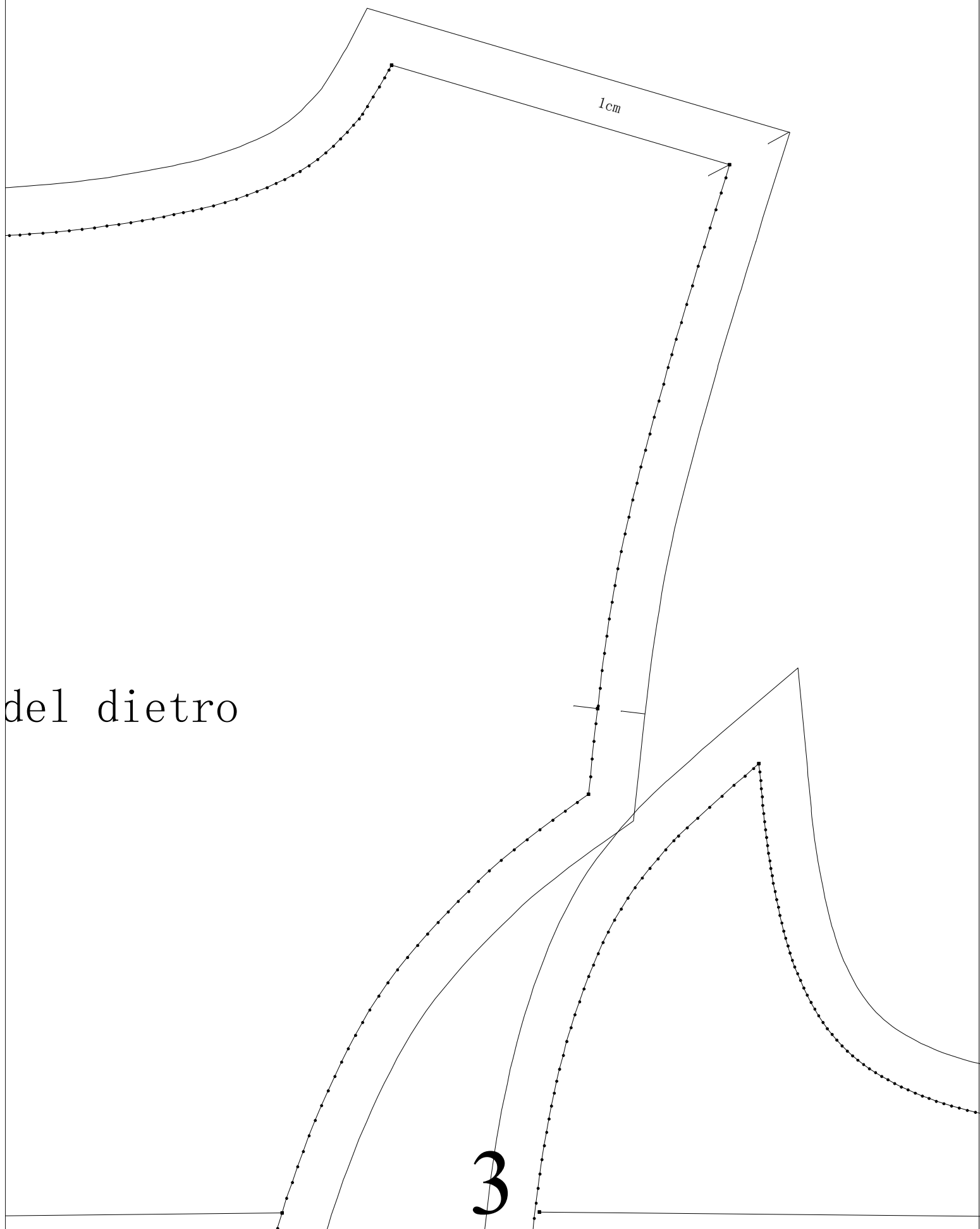
1



del davanti
re margine di cucitura
davanti e' intero

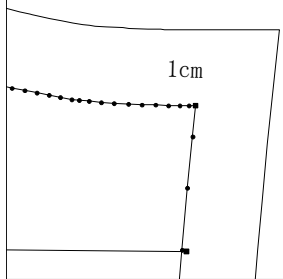
centro
2 volte

2

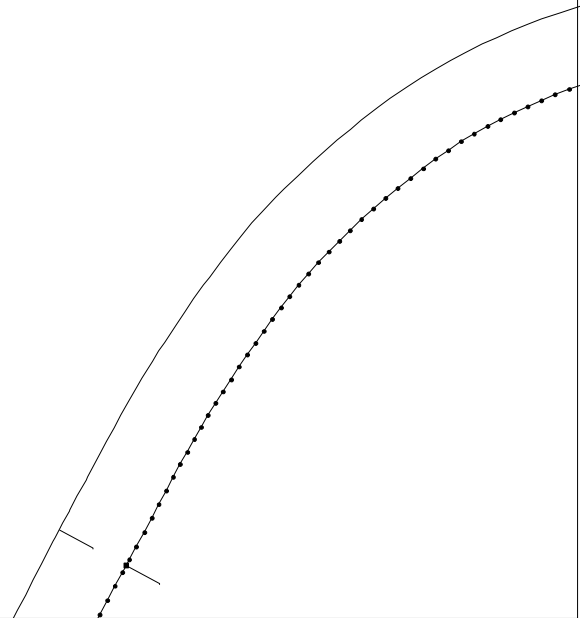


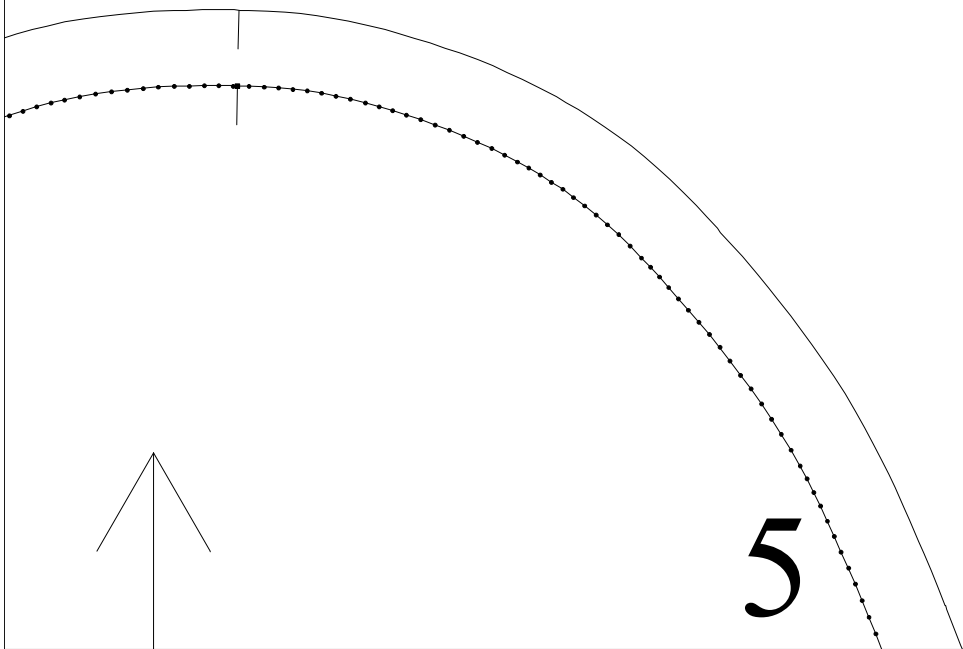
del dietro

3



4



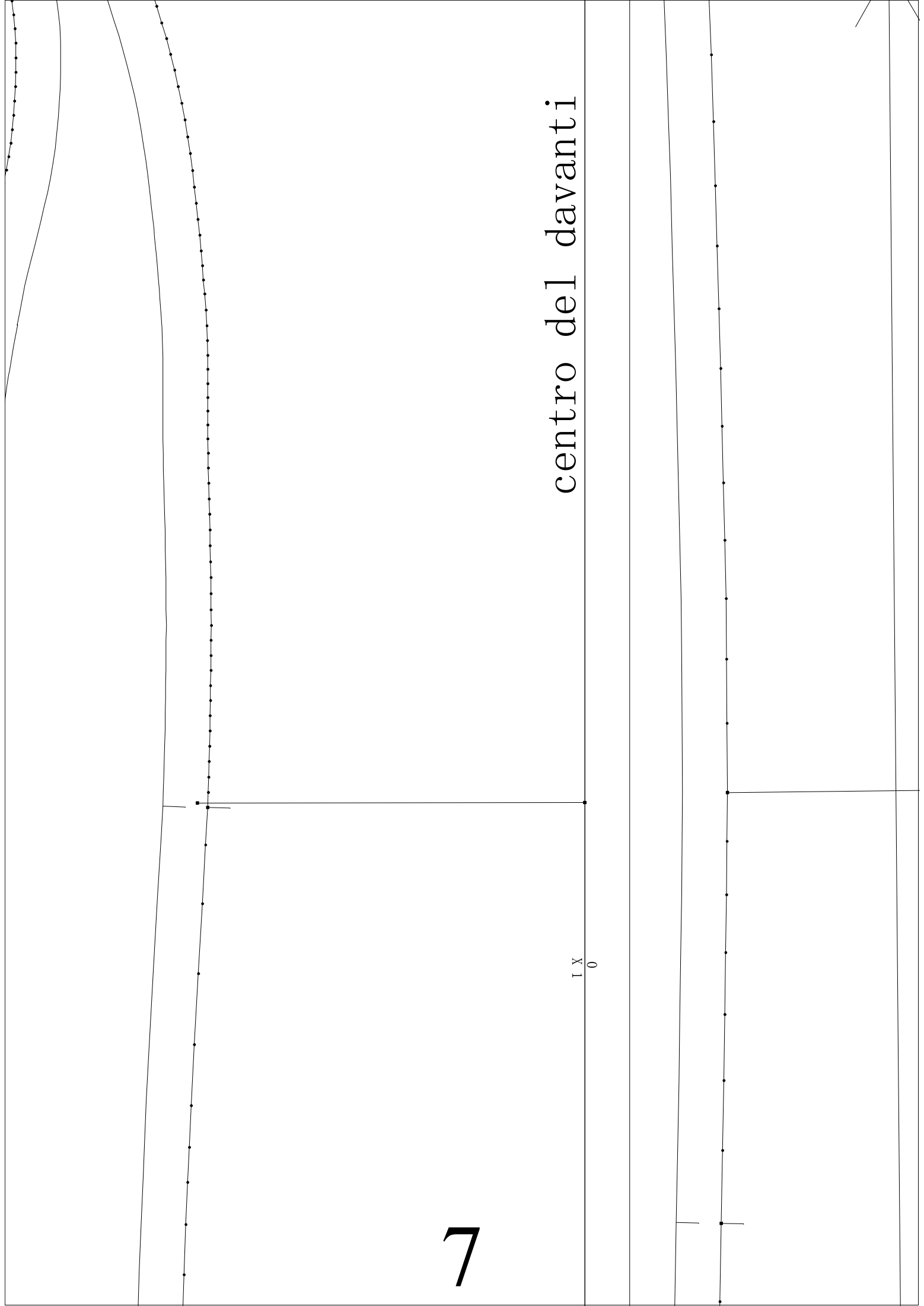


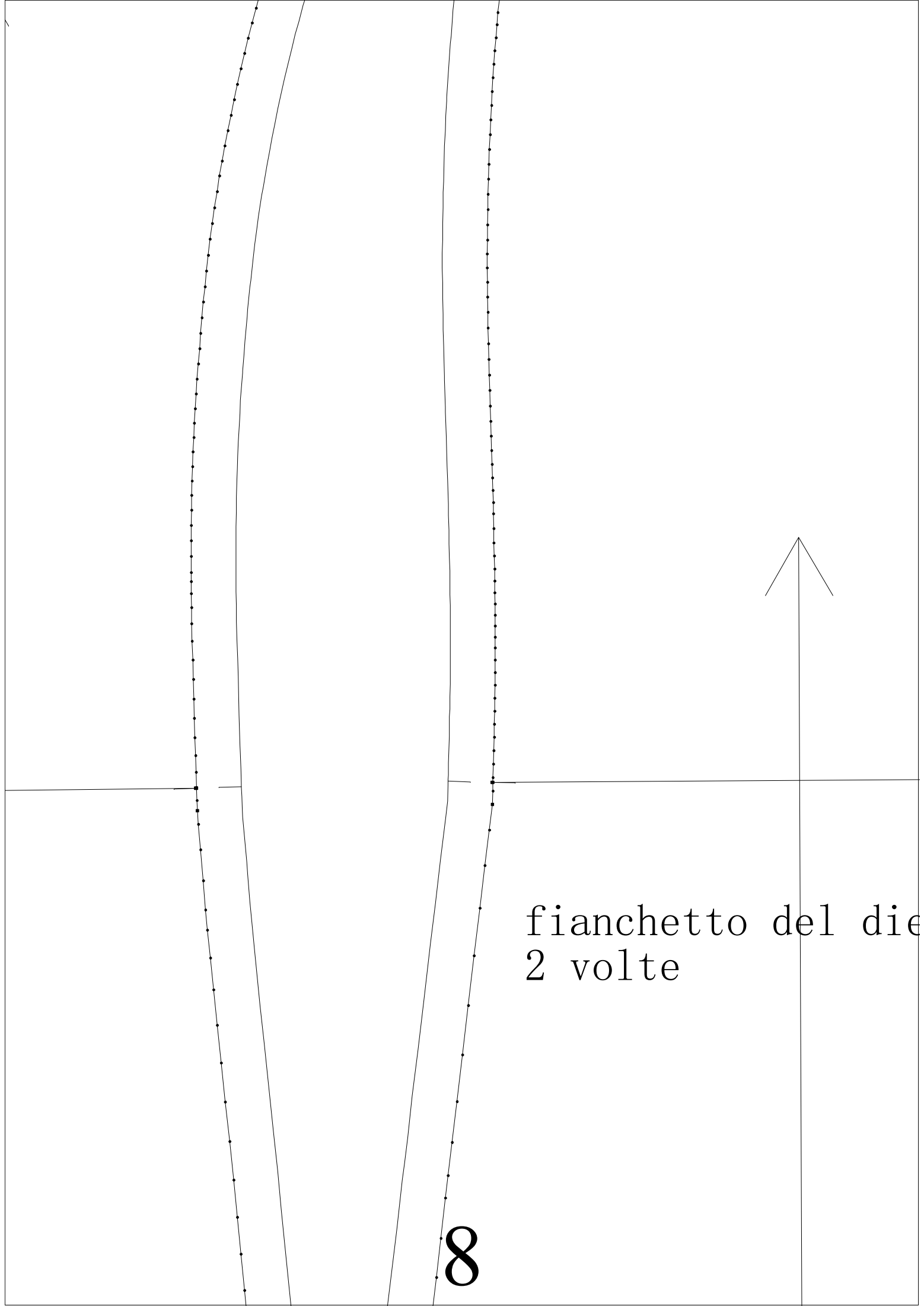
fianchetto del davanti
2 volte

7

centro del davanti

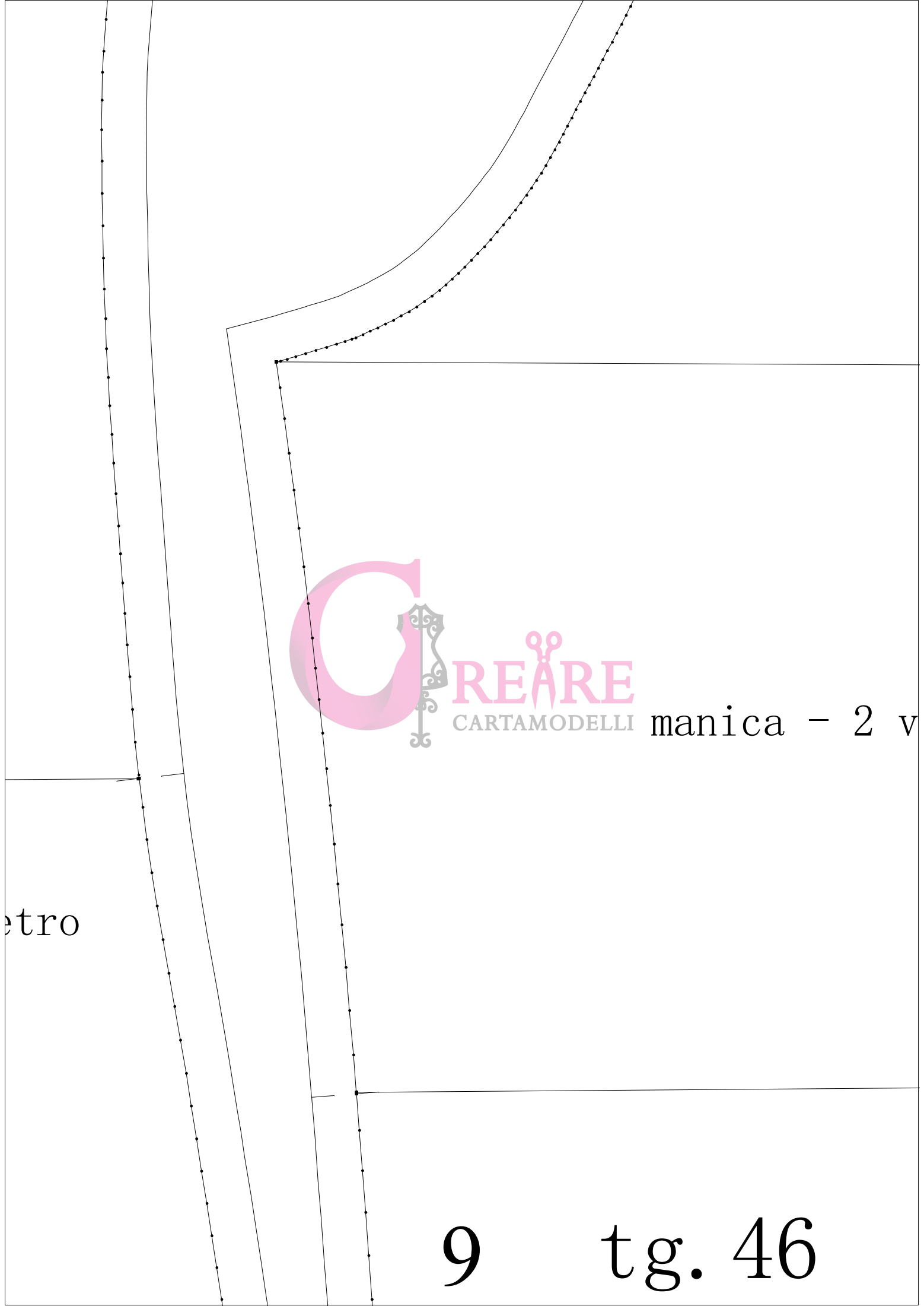
$I X_0$





fianchetto del die
2 volte

8



manica - 2 v

etro

9

tg. 46

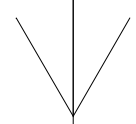
olte

4
X 1

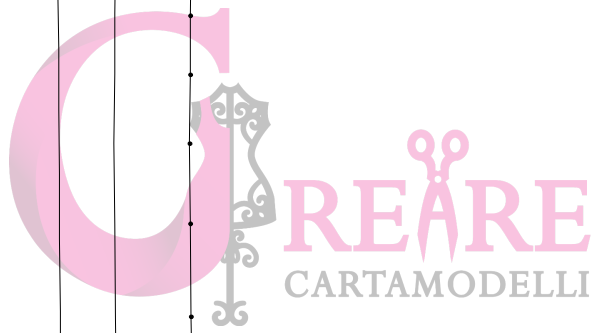


10





X 1
2



seno - 100 cm

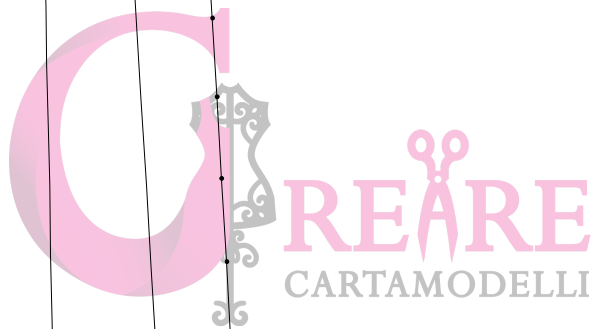
vita - 83 cm

bacino - 105

altezza seno - 29

lunghezza vita dietro

lunghezza manica 60

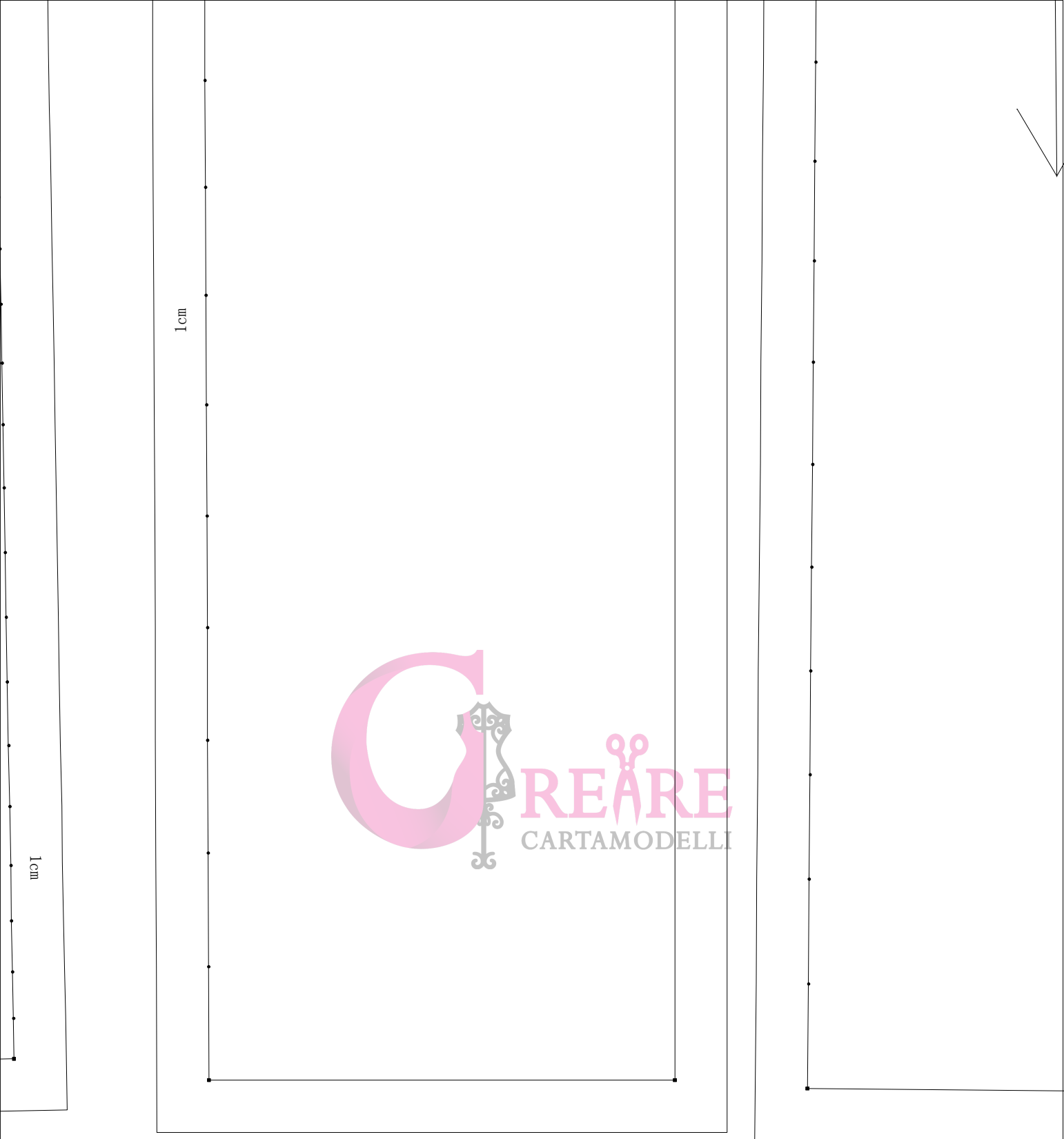


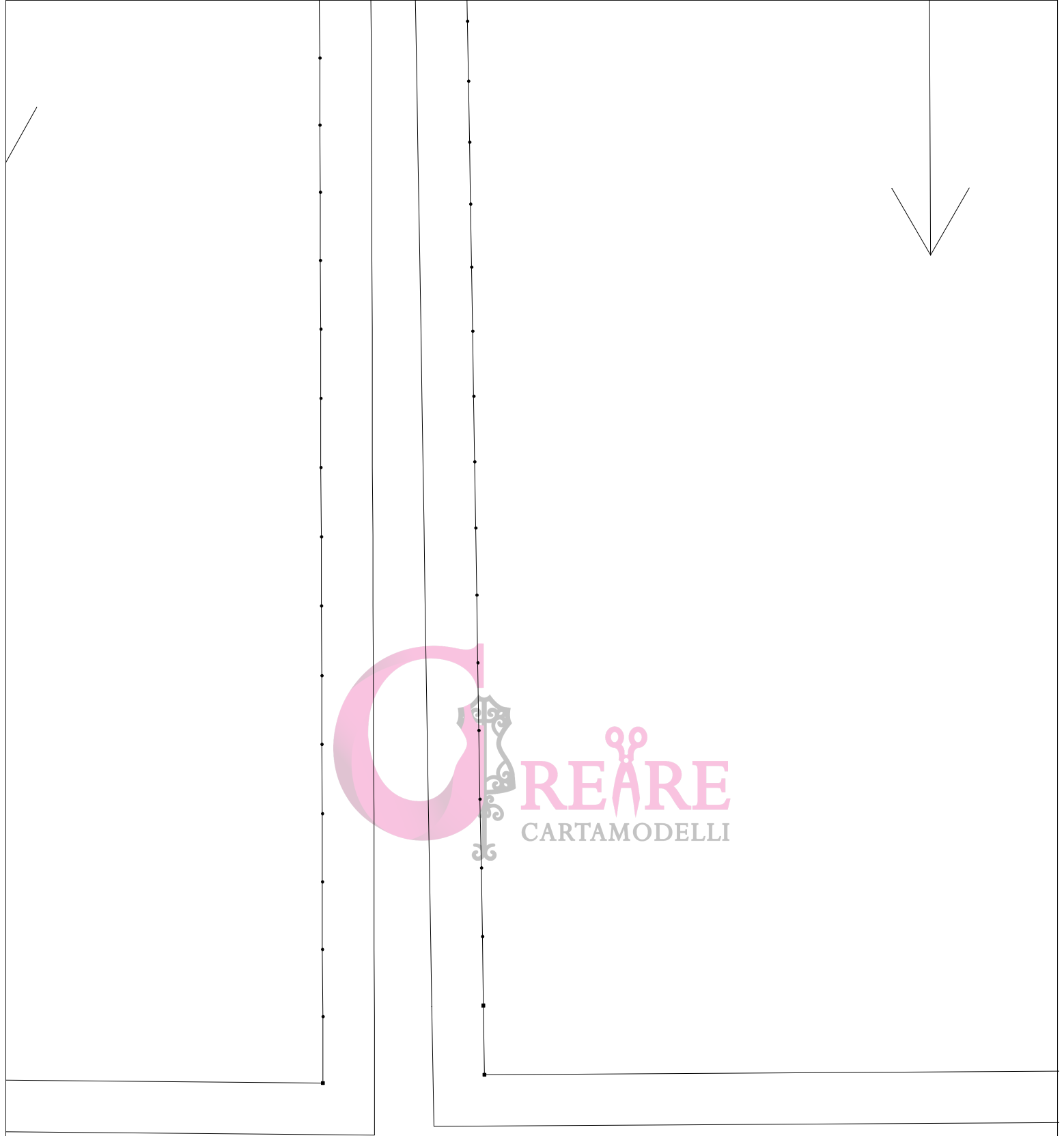
ro dalla vertebra - 40 cm
0,5 cm



1cm









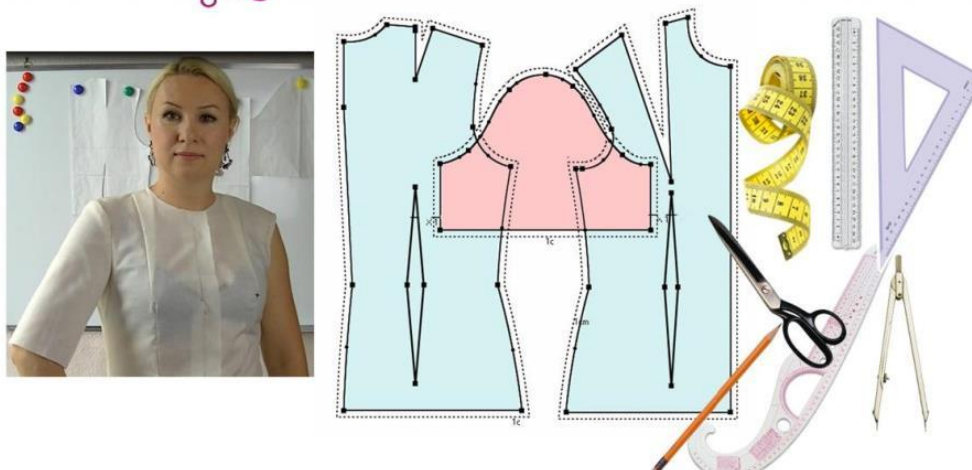


Se non riesci adattare su misura modello della tg. Standard, realizza il tuo corpino Perfettamente su Misura e praticamente senza difetti.

Scopri video corso >>

<https://www.crearecartamodelli.it/prodotto/modello-base-su-misura/>

Metodo Sartoriale *SU MISURA*



SENZA DIFETTI!!!

Per info scrivi a crearecartamodelli@gmail.com